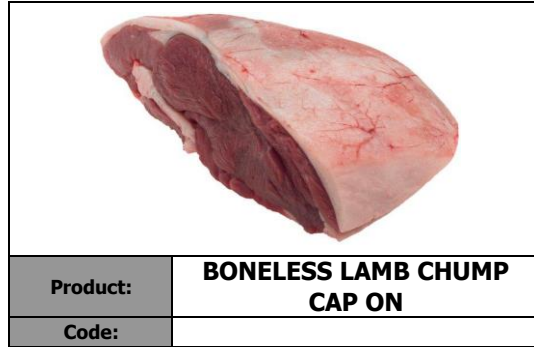
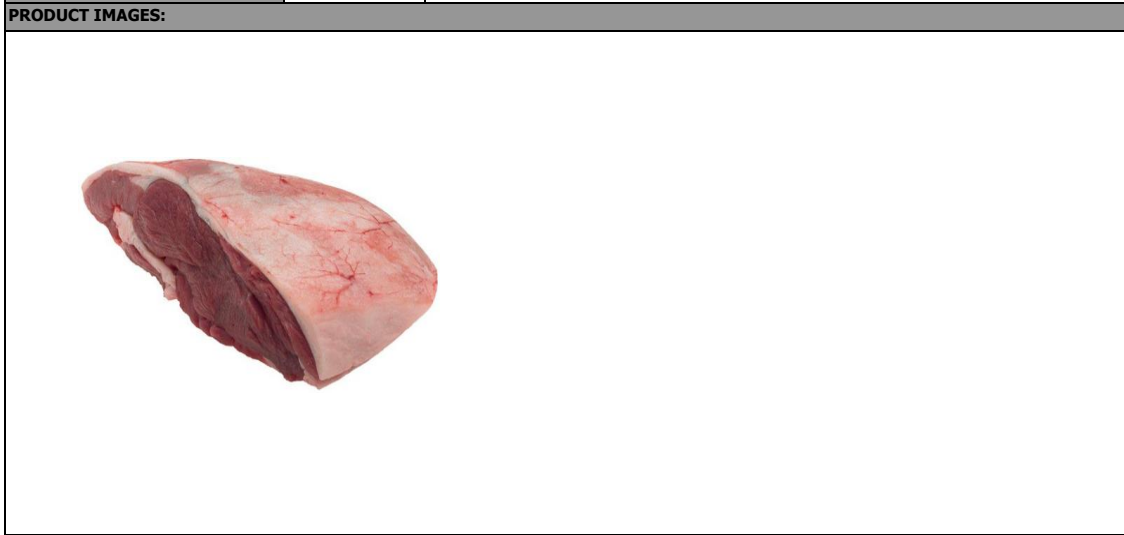


## NEW ZEALAND LAMB PRODUCT SPECIFICATION

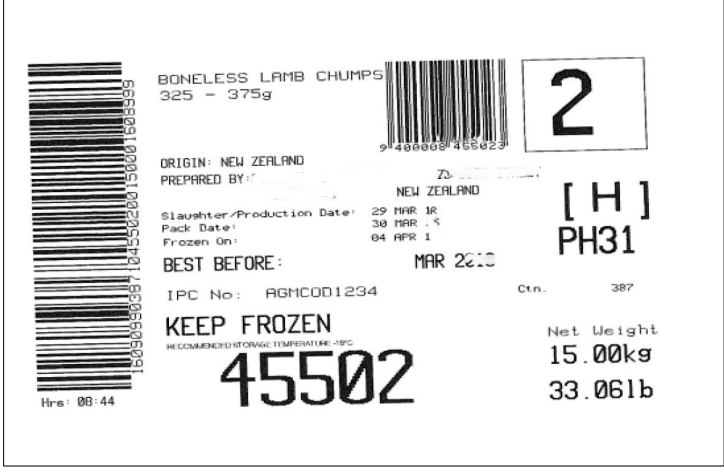
<b>TYPE:</b>	LAMB
<b>MARKET:</b>	UK/EU
<b>STATE:</b>	FROZEN
<b>BRAND:</b>	
<b>PLANT:</b>	
<b>SHELF LIFE:</b>	24 Months
<b>RECOMMENDED STORAGE:</b>	KEEP FROZEN at -18°C during transportation and storage to ensure shelf life of 24 months
<b>OTHER DETAILS:</b>	Halal Certified



<b>PROCESS DETAILS:</b>	Derived from a bone in lamb leg. Rump/chump is removed by a straight cut across the leg, as close to the ball joint as possible. Cap of chump is bevelled to 5mm on all edges.		
<b>KEY POINTS FOR SPEC</b>	Individually weight ranged + packed 4 portions / vacuum bag. Very consistent specification ideal for catering or counter display on a pack basis.		
<b>PACK DETAILS:</b>	Four chumps packed into vacuum bag (VP). 9 VP bags per 1/2 Frozen Carton. 36 portions per carton.		
<b>BAG DETAILS:</b>	Plain vacuum bag	<b>WEIGHT RANGE:</b>	375-450g
		<b>PACKS PER CASE:</b>	9
<b>PORTIONS PER CASE:</b>	36		



<b>CARTON DETAILS:</b>	1/2 Frozen Carton
------------------------	-------------------

<b>SAMPLE LABELS:</b>	
	
<b>LABELLING LANGUAGE:</b>	English