

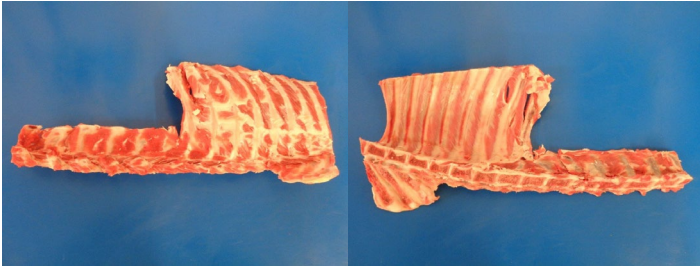
PRIMAL SPECIFICATIONS

Product	Lamb Bones		
Product Code	919	Version No:	1

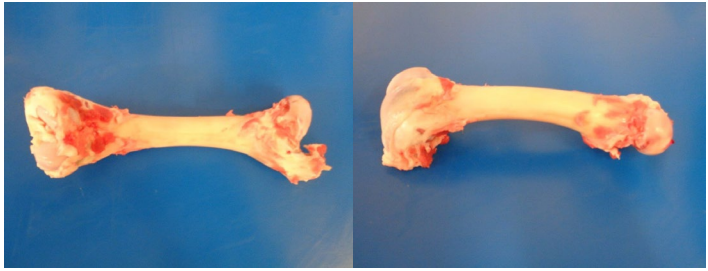
Product Information:	
Product Name:	Lamb Bones
Linden Code:	919
Eligibility Criteria:	Lamb <12 Months
Eligibility Criteria i.e. British, Irish:	UK
Butchery Information:	<ol style="list-style-type: none"> When producing the Lamb Bones they will be free from hair, offal material, faecal contamination and any other product not associated with the carcass The Lamb Bones may Comprise of, <ul style="list-style-type: none"> Rib Cage consisting of (Neck, Rib, Sternum & Atlas Bone) Rib & Loin bone Patella bone Aitch/Pelvis bone Scapula bone Tibia bone Atlas bone Breast Bone Tibia Tip Bone Radius/Ulna bone The Bones are to be cleaned from meat and fat during production
Primal Weight:	N/A
Case fill:	Fill level to the top of the Jumbo bin
Nature of packaging:	Jumbo Bin
Shelf Life Dates:	N/A
Date information required on label:	Kill Date & Pack Date only required
Other Label Information needed:	Product Name, Batch number, Origin,(Born In , Reared In,) Slaughtered In and Cut In, Tare Weight & Net Weight
Internal labelling requirements:	N/A
Signed By Technical	Signed By Sales
Date:	Date:
Signed by Production	Signed By Customer
Date:	Date: 27/03/24

PRIMAL SPECIFICATIONS

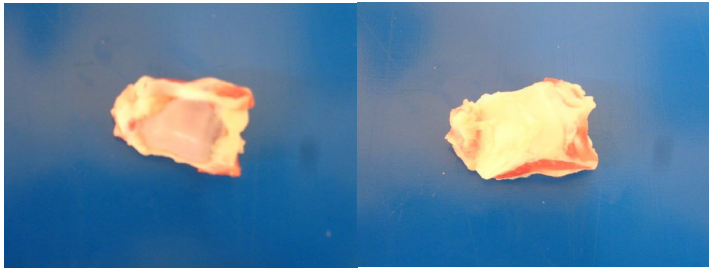
Product	Lamb Bones		
Product Code	919	Version No:	1



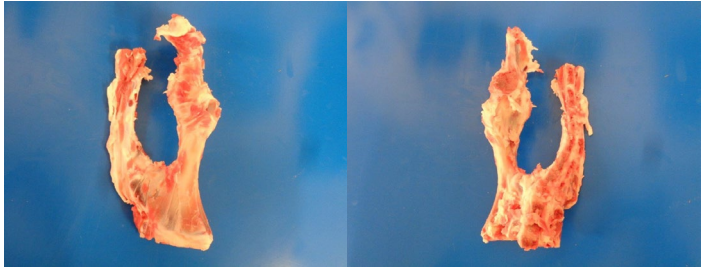
RIB, LOIN & CHIME BONE



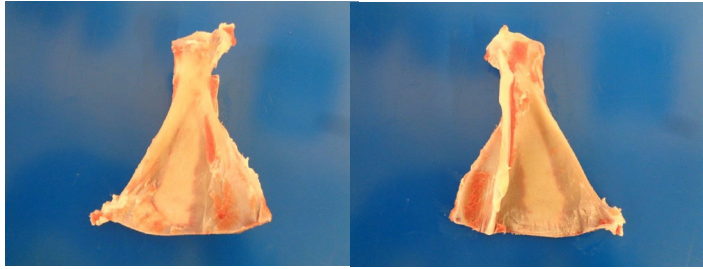
FEMUR BONE



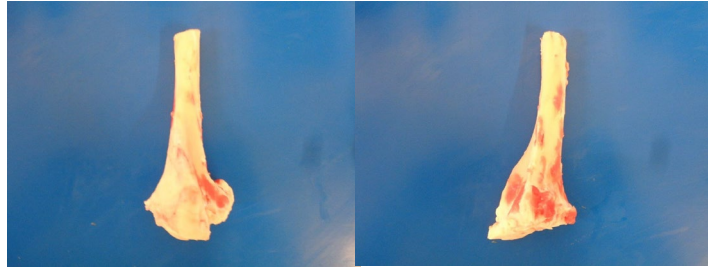
PATELLA BONE



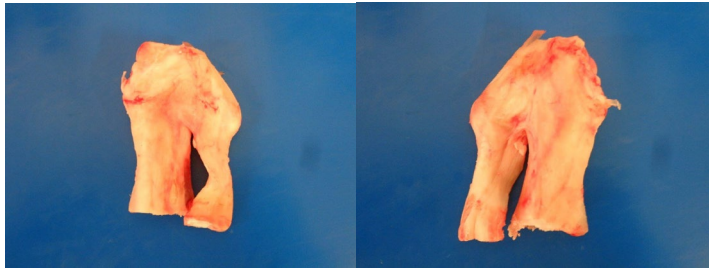
AITCH/PELVIS BONE



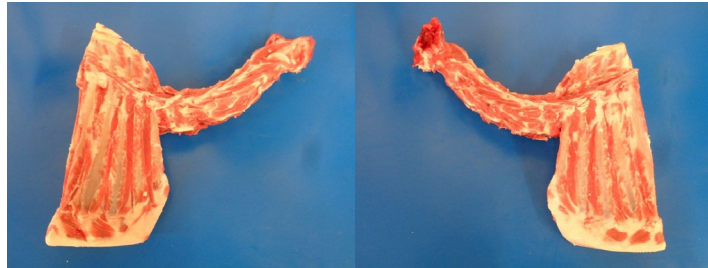
SCAPULA BONE



TIBIA BONE



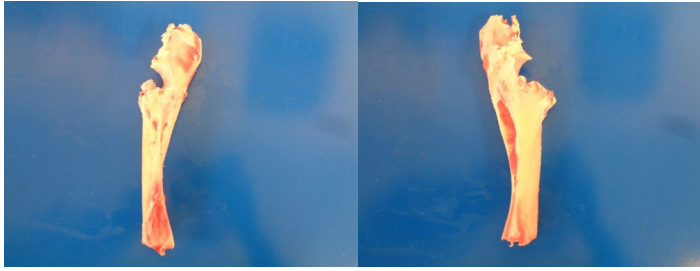
TIBIA TIP BONE



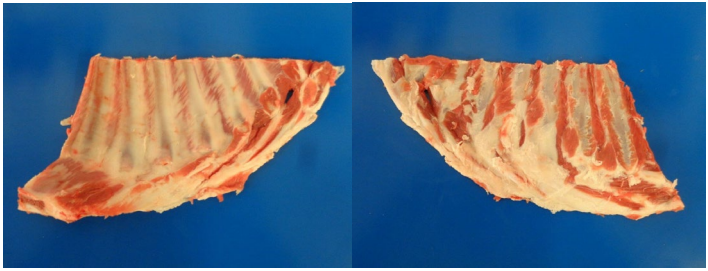
RIB CAGE, NECK, ATLAS & STERNUM BONE

PRIMAL SPECIFICATIONS

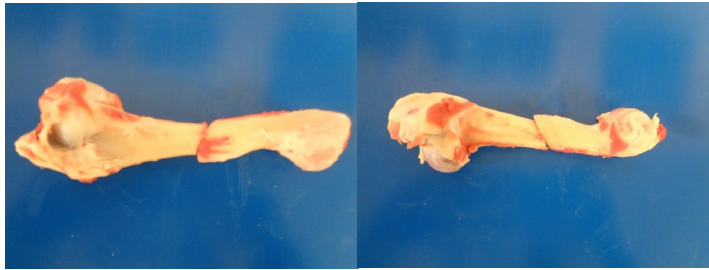
Product	Lamb Bones		
Product Code	919	Version No:	1



RADIUS/ULNA BONE



BREAST BONE BONE



HUMERUS BONE