



PRODUCT SPECIFICATION

Boneless Skinless Shredded Duck Meat
Cooked seasoned shredded duck meat, packaged in a protective atmosphere and frozen.

Issue No
Product Code
Product
Product Description

PACKING CONFIGURATION

Product Attribute	
Packs Per Case	10
Case Net Weight	10kg
Layers Per Pallet	7
Cases Per Layer	10
Cases Per Pallet	70
Barcode Outer	
Barcode Inner	
Primary Packaging	PET/PE Vacuum Bag, Tare 8-10g, Dimensions H330xW220mm
Secondary Packaging	Corrugated Cardboard, Tare 650g, Dimensions 390x290x245mm
Shelflife from Manufacture	24 months
Coding Details	Lot No., Best Before, Production Date.
Country of Origin	China
Storage Conditions	- 18°C

PRODUCT PROFILE

Appearance	Typical dark flesh associated with duck.
Flavour	On cooking typical of duck meat with natural fat juices from the skin
Texture	Soft and Juicy. No stringy tough fibrous pieces. No dried end pieces.
Quality Standards	Absent of foreign bodies and off odours. Whilst every care has been taken to remove bones some may remain.
Ingredients	Duck Meat (96%), Salt, Pepper, Sugar, Aniseed, Cinnamon, Cloves.
Quid Value	Duck 96%
Allergy Warning	For allergens, see ingredients in Bold . Packaged in a protective atmosphere.

REHEATING GUIDLINES

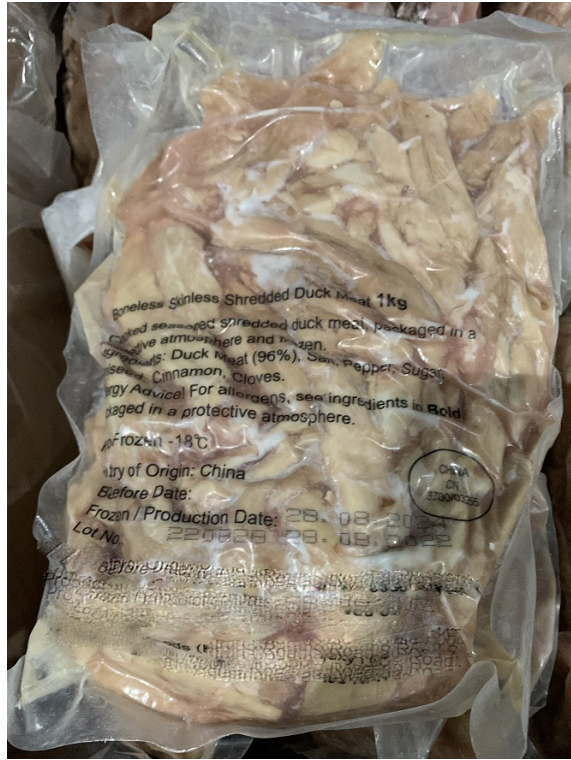
Re-Heat or Cook from	From Defrost
Oven Bake	
Deep Fry	
Microwave	Thaw naturally, then microwave on medium power for 3-5 minutes. Dependant on wattage. Ensure duck is thoroughly heated throughout prior to serving.
Grill	
BBQ	
Thaw & Eat	

FOOD INTOLERANCE DATA	Absent Of	Details
Added Salt	No	Salt
Added Sugar or Sweeteners	No	Sugar
Additives	Yes	
Animal Proteins	No	Duck
Artificial Colours	Yes	
Artificial Flavours	Yes	
Artificial Preservatives	Yes	
BHA / BHT	Yes	
Celery & Celery Derivatives	Yes	
Cereals Containing Gluten	Yes	
Corn or Maize	Yes	
Crustaceans & Crustacea Derivatives	Yes	
Eggs & Egg Derivatives	Yes	
Fish & Fish Derivatives	Yes	
Genetically Modified Ingredients	Yes	
Milk & Milk Derivatives	Yes	
Mustard & Mustard Derivatives	Yes	
Nuts & Nut Derivatives	Yes	
Peanuts & Peanut Derivatives	Yes	
Sesame Seeds & Sesame Oils	Yes	
Soya & Soya Derivatives	Yes	
Spice & Spice Extracts	No	Pepper, Aniseed, Cinnamon, Cloves
Starch / Modified Starches	Yes	
Sulphur Dioxide & Sulphites	Yes	
Wheat & Wheat Derivatives	Yes	
Yeast & Yeast Derivatives	Yes	
Lupin & Lupin Derivatives	Yes	
Molluscs & Mollusc Derivatives	Yes	

PRODUCT SUITABILITY	Suitable For	Details
Halal	No	
Kosher	No	
Vegetarians	No	
Vegans	No	
Lactose Intolerance	Yes	
Coeliacs	Yes	

NUTRITIONAL INFORMATION		RI% (Adults)	%
Typical Values per 100g as	Sold		
Energy	917kJ/ 220kcal	8400kj/2000kcal	11%
Fat	14g	70g	20%
of which Saturates	3.8g	20g	19%
Carbohydrates	0.8g	260g	0.31%
of which Sugars	<0.5g	90g	0.56%
Protein	22g	50g	44%
Salt	0.8g	6g	13.33%

MICROBIOLOGICAL INFORMATION	
<i>S. aureus</i>	Absent in 25g
<i>Salmonella spp</i>	Absent in 25g
TVC	< 1,000,000 cfu/g
<i>Enterobacteriaceae</i>	< 10,000 cfu/g
<i>Escherichia Coli</i>	Absent in 25g
<i>Listeria Monocytogenes</i>	Absent in 25g



Duck