

PRODUCT SPECIFICATION

Product Name	Turkey Stag Drums
Product Code	TBC
Product Description	Fresh breeder turkey drums of a mixed weight and size
Country of Origin	UK
Welfare Standard	Red Tractor
UK Licence Code	GB
Supplied By	
Produced at	

Contact Details			
	Name	Telephone	Email

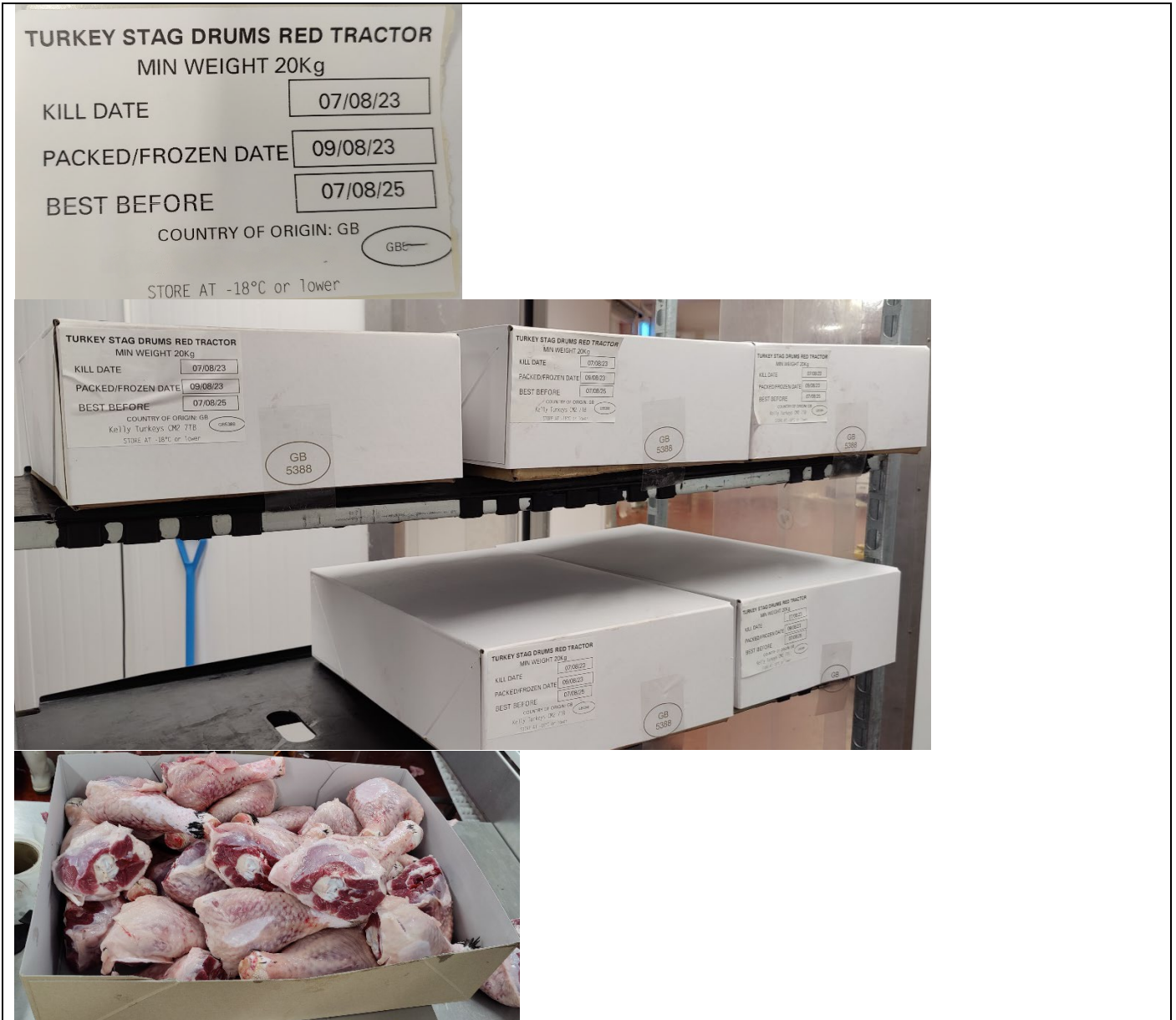
Quantity/Volume	
Weight/Case	20kg (+/- 500g)
Net Weight/ Volume per Unit	20kg/box
Gross Weight per Unit	21kg
Unit Dimensions	Height: 135mm
	Width: 390mm
	Length: 550mm

Shelf Life Into Customer	
Minimum Shelf Life	30 Days
Maximum Shelf Life	2 Years

Storage and Preparation	
Storage Conditions	Keep frozen <18°C
Freezing & Defrosting Instructions	Defrosting: Thaw overnight in the refrigerator. Keep refrigerated. Store at below 3°C, once opened use within 48 hours.
Cooking Instructions	As per customer requirements

Packaging & Labelling

PRODUCT SPECIFICATION





Packaging Type	Material	Recyclability
Primary Pack*	White Cardboard Box 135 x 390 x 550	Recyclable
Secondary Pack	Label 100mm x 150mm	Not currently recyclable
Tertiary	Pallet 1200mm x 1000mm	Recyclable
Tertiary	Clear Pallet Wrap	Check with waste haulier
Tertiary	A4 Pallet Label	Recyclable

*Primary packaging complies with “The Materials and Articles in Contact with Food (Amendment) (EU Exit) Regulations 2019” and does not contain or use Bisphenol A (BPA) during its manufacture.

Pallet Configuration	
Weight per case	20kg
Cases per Layer	5
Layers per Pallet	8
Pallet Quantity	600kg
Minimum Order Quantity	1 crate
Inner Barcode	Not Assigned
Outer Barcode	Not Assigned

PRODUCT SPECIFICATION

				<p>present. Gamey smell, stronger than most poultry. Robust flavour</p> 
--	--	---	--	---

Packaging Standards

Component	Sub-Component	Red - Unacceptable	Green - Acceptable
Box	Integrity	Torn or damaged Box.	No marks or tears on box
		Unstrapped or insufficient strapping.	Sufficiently strapped.
Label	Correct label	Incorrect label used.	Correct labels and information. Placed within guide marks on box. Applied straight
	Correct position	Label wrongly positioned.	Label positioned end of the box
	Correct information	Incorrect or missing information.	Accurate information.
	Print legibility	Poor illegible print quality.	Legible print.
	Print registration	Print incorrectly positioned outside lines of boxes.	Print located within relevant boxes.
	Fastness & Cleanliness	Label loose, folded over and dirty, smudged or blood stained.	Fully adhered to box surface. Label clean and no blood staining

Appearance in Pack – Raw

Component	Sub-Component	Red - Unacceptable	Green - Acceptable
Crate/Bag	Orientation	Incorrect product in bag	Multiple

Organoleptic Standards

Component	Sub-Component	Red - Unacceptable	Green - Acceptable
Turkey	Aroma	Uncharacteristic turkey aroma with strange undertones.	Raw turkey aroma. No off or foreign odours.
	Flavour	Uncharacteristic of turkey. Foreign or off flavours.	Slightly gamey, Robust Flavour. No off or foreign flavours.

Photographic References