

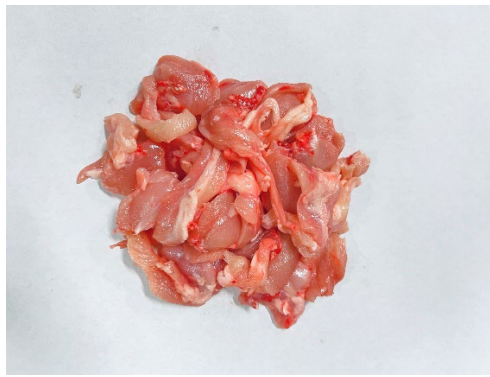
# Product Specification



Product Description	Chicken Trim (Uncalibrated)
Product Accreditation & Welfare Standard	Halal
Country of Origin	UK
Declared Ingredients	Chicken 100% in final product

Supplier Name	MEATEX
Telephone	01323 873645
Approval Number	GB

## Product Visual Example



## Sensory Details:

Odour	Fresh chicken no off odours or taints when raw
Colour	Light skin tones with 'spots' of dryness
Texture	Typically, fleshy feel with slight greasiness
Product Standards	<ul style="list-style-type: none"><li>• Cut from whole fresh chicken.</li><li>• No bones</li><li>• Free of deep skin scratches that are excessively dark.</li><li>• Free from foreign matter, dirt, faeces, or blood staining</li></ul>

## Shelf-Life Information

Product Packaging Description	Shelf Life
Maximum Product Life (Fresh)	Kill + 11 days
Maximum Product Life (Frozen)	Kill + 18 Months

## Weight Control

Target Weight / Size tolerance (Individual Unit)	Mixed Sizes
Variance in product	20kg / Box

## Product Specification



### Product Storage & Use Conditions

Once opened	Use within 48 hours and within use by date
Storage conditions	Keep refrigerated 0°C - +4°C
	Suitable for home freezing. Freeze on the day of purchase. Use within one month of freezing. Defrost in a refrigerator prior to cooking. Consume within 24 hours of defrosting. Do not re-freeze once thawed.

### Food Contact Packaging Details:

Description	Material
Liner	Food grade plastic

### Outer Packaging Material Details

Description	Material	Dimensions	Weight
Plain base	Food Grade Solid fibreboard	542/378/135mm	560gr
Plain lid	Food Grade Solid fibreboard	586/382/124mm	480gr
Plastic Crate	Grey Food Safe Crates	600/400/197mm	1.7kg
Tape GB 5002	White PVC green print	50mm	N/A
Pallet	3 way wooden (All pallets covered)	1000x1200mm	26-32kg

\*\*Plain Base & Plain lid are 100% recyclable.

### Delivery Conditions

Product Packing description	Temperature (recommended)
Fresh (Loose)	0-4c
Frozen	-18c

### Product Labelling

<b>Labelling Details:</b> Supplier Name & Contact details Approval Number Customer Product Code Product Description Kill Date Pack Date Use By Date Weight Batch Traceability Barcode
--



**Free From:**

Free From (Does not contain as an ingredient)	YES	NO
Added protein	X	
Additives	X	
Artificial Colours	X	
Artificial Flavours	X	
Artificial Preservatives	X	
Beef & Beef derivatives	X	
Benzoates	X	
BHT/BHA	X	
Caffeine	X	
Colours Azo & Coal Tar Dyes	X	
Corn/Maize derivatives	X	
Egg & egg derivatives	X	
Garlic	X	
Gelatine	X	
Genetically modified material/organisms	X	
Glutamates/gluten	X	
Lamb & lamb derivatives	X	
Milk & milk derivatives	X	
Modified starch	X	
Nuts & nut derivatives	X	
Pork & pork derivatives	X	
Salt	X	
Seafood & seafood derivatives	X	
Seeds	X	
Soya & soya derivatives	X	
Sugar	X	
Sulphur dioxide	X	
Sweeteners	X	
Wheat & wheat derivatives	X	
Yeast & yeast derivatives	X	

**Microbiology testing**

Test	Method	Target	Limit	Action	Frequency	Positive Release
Salmonella (product)	Analytical	Not Detected per 25g	Not Detected per 25g	Detected	Fortnightly	No
Campylobacter (product)	Analytical	<1000 cfu/g	1000 cfu/g	>1000 cfu/g	Weekly	No
TVC (Indicator Only)	Analytical	<10000	500,000	N/A	**	No
E.Coli (product)	Analytical	<10	10	>10	**	No
Staph Aureus(product)	Analytical	<20	100	>100	**	No
E. Coli (factory cleaning standards)	Analytical	<10 per 10,000	Quarterly	>10	Quarterly	No

\*\* Product Frequency: One Finished Product shelf-life type annually. Random shelf-life tests are carried out annually on the product beyond the prescribed Shelf life.