

Doc Ref	MSPEC 31
Issue No	1
Issue Date	01/12/2025
Authorised	Technical
	Page 1 of 4

<b>Product</b>	<b>Cod Fishcake (95g - 105g)</b>		
<b>Description</b>	Cod Fishcake with parsley in a golden breadcrumb coating.		
<b>Pack Size</b>	24 x 95-105g – Minimum Net Weight 2.28kg		
<b>Cases per Pallet</b>	To be advised		
<b>Manufacturing Site</b>	Meatex Grimsby, Humber Street, Grimsby DN31 3HL		
<b>Site Code</b>	GB GG 142		
<b>Technical Contact</b>	Technical	technical@meatex.co.uk	Tel: 01472 350082
<b>Sales Contact</b>	Jane Hind	Jane@meatex.co.uk	Tel: 01323 818321

<b>Ingredients</b>	Minced Cod ( <b>FISH</b> ) (51%), Reconstituted Potato (Potato Flake, Water), Coating: ( <b>WHEAT</b> Flour ( <b>WHEAT</b> Flour, Calcium Carbonate, Iron, Niacin, Thiamin), Salt, Yeast, Colour: Paprika), Rusk ( <b>WHEAT</b> Flour ( <b>WHEAT</b> Flour, Calcium Carbonate, Iron, Niacin, Thiamin), Salt), Rapeseed Oil, Salt, Wheat Starch ( <b>WHEAT</b> ), Colours: Paprika, Carmine), Pepper, Dried Parsley.
<b>Allergens</b>	Fish, Wheat Gluten
<b>Cooking Guidelines</b>	For best results cook from frozen. Shallow Fry: Fry over a medium heat for 7-8 minutes turning occasionally. Deep Fry: Heat oil to 180°C and fry for 5-6 minutes. Grill: Place under a medium grill for 10-12 minutes turning once. Oven Bake: Pre heat Oven to 200°C / Fan 190°C and bake for 20-25 minutes. Ensure that product is piping hot throughout before serving.
<b>Storage</b>	Store at -18°C or below. Do not re-freeze once thawed.
<b>Shelf Life</b>	Best Before End - 18 months from date of production if stored at -18°C or below.
<b>Country of origin</b>	Produced and packed in the UK.

<b>Nutritional Information</b>	Typical values per 100g as sold		
	<b>Energy</b>	kJ	834
	<b>Energy</b>	Kcal	199
	<b>Fat</b>	g	8.0
	<b>(of which saturates)</b>	g	0.7
	<b>Carbohydrate</b>	g	21.5
	<b>(of which sugars)</b>	g	0.7
	<b>Fibre</b>	g	1.7
	<b>Protein</b>	g	9.3
	<b>Salt</b>	g	0.9

<b>Agreed &amp; Approved By</b>	<b>Name</b>	<b>Position</b>	<b>Signature</b>	<b>Date</b>
For Meatex Grimsby	Technical	Technical Manager		01/12/2025

Microbiological Standards		Target	Maximum
	TVC / g	<500,000	>1,000,000
	Coliforms / g	<500	>5000
	E Coli / g	<10	>100
	Staph Aureus / g	<20	>200
	Salmonella / g	Absent in 25g	Present in 25g

Quality Parameters	Colour	Coating to be an even natural light pale brown colour that becomes golden brown when cooked.
	Texture	Coating texture to be light and crunchy and the core will be succulent and moist.
	Flavour	Typical of cod with a slight parsley flavour when consumed.
	Odour	Pleasant and characteristic with no off taints.

Physical Parameters	Finished Weight	95-105g
	Coating Pick Up %	20% (+/- 2%)

Unacceptable Defects	Dark brown or pale-yellow coloured coating.
	Soft, wet soggy coating.
	Gaps in coating > 2cm sq.
	Any damaged or misshapen cakes.

Coating	Battermix A121 – Breadcrumb CR30	
Packaging	White Cardboard Carton with Blue LDPE liner	
Product Coding	Inner	N/A
	Outer	Best Before End (MMM YYYY) – Production Date Code

Process Outline	<p>Raw materials are combined, mixed and formed into cakes.</p> <p>The product is deposited onto the conveyor belt manually to be enrobed and transferred automatically to the pre-dust and batter application line.</p> <p>The coated product is passed through the fryer to flash fry and set the batter.</p> <p>After frying the product is placed on cooling racks before being transferred to the blast freezer.</p> <p>Once frozen the product is transferred to the packing line where it is de-racked and manually packed into bags / cartons. Cartons are then passed through the metal detector. A label is applied to the outer case listing ingredients, allergens, expiry and production dates. Placed in cold storage at -18°C ready to be dispatched.</p>
-----------------	--

Agreed & Approved By	Name	Position	Signature	Date
For Meatex Grimsby	Technical	Technical Manager		01/12/2025

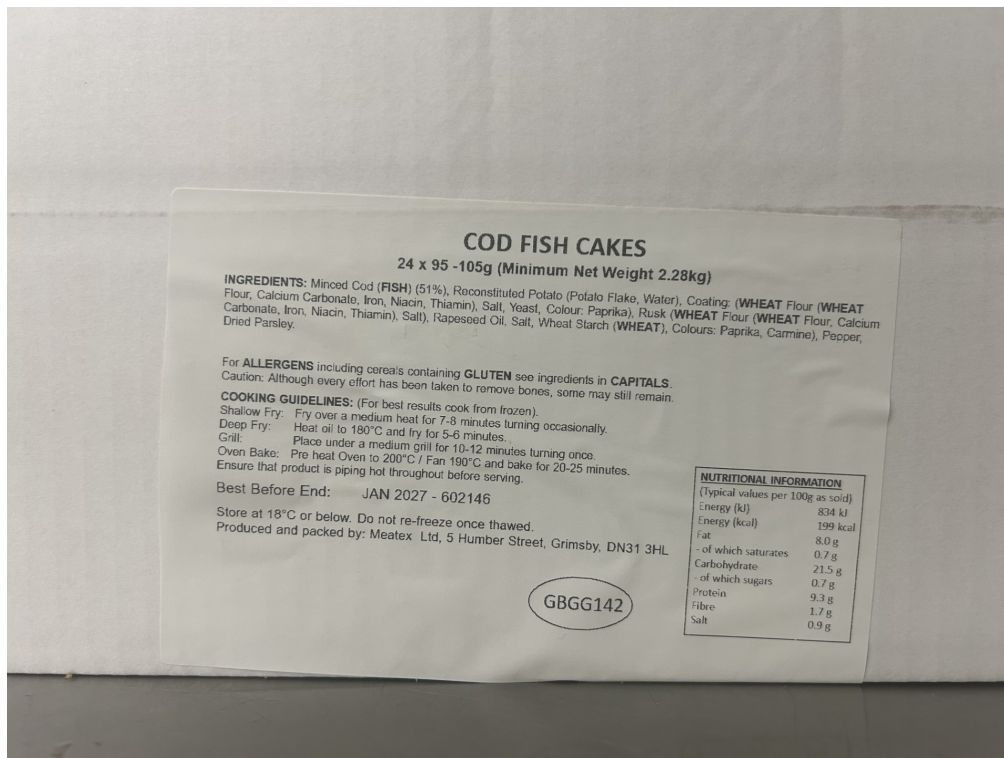
## Food Allergen, Dietary & Intolerance Data

ALLERGEN	CONTAINS		ADDITIONAL INFORMATION
	YES	NO	
Celery / Celeriac & products thereof		X	
Cereals containing gluten (Wheat, Rye, Barley, Oats, Spelt, Kamut) & products thereof *	✓		Wheat
Crustaceans & products thereof		X	
Eggs & products thereof		X	
Fish & products thereof	✓		Cod
Milk & Dairy products & products thereof (including lactose)		X	
Mustard & products thereof		X	
Peanuts & products thereof		X	
Nuts, such as almonds, hazelnuts, walnuts, pecan nuts, Brazil nuts, pistachio, cashew and macadamia (Queensland) nuts		X	
Sesame seeds & products thereof		X	
Soy (soya) beans & products thereof		X	
Sulphur Dioxide & Sulphites & products thereof at levels >10mg/kg or litre		X	
Lupin		X	
Molluscs; e.g. clams, mussels, whelks, Oysters. Snails and squid		X	
<b>Suitable For</b>			
Vegan		X	
Vegetarian		X	
Halal		X	
Kosher		X	

Agreed & Approved By	Name	Position	Signature	Date
For Meatex Grimsby	Technical	Technical Manager		01/12/2025

Doc Ref	MSPEC 31
Issue No	1
Issue Date	01/12/2025
Authorised	Technical
	Page 4 of 4

## LABEL EXAMPLE



Agreed & Approved By	Name	Position	Signature	Date
For Meatex Grimsby	Technical	Technical Manager		01/12/2025